

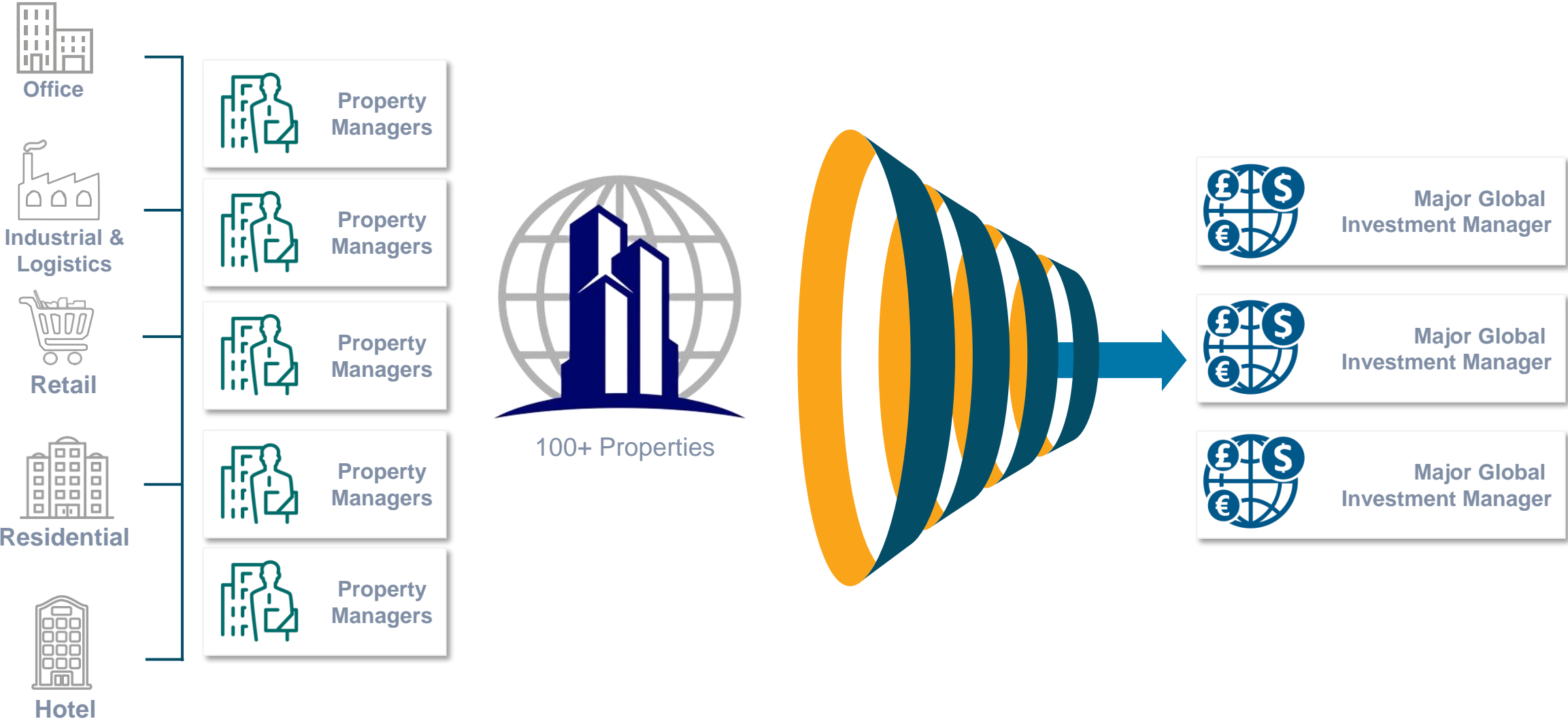


# Data Uncovered – Aggregation, Normalisation and Validation –

Harnessing data's full potential

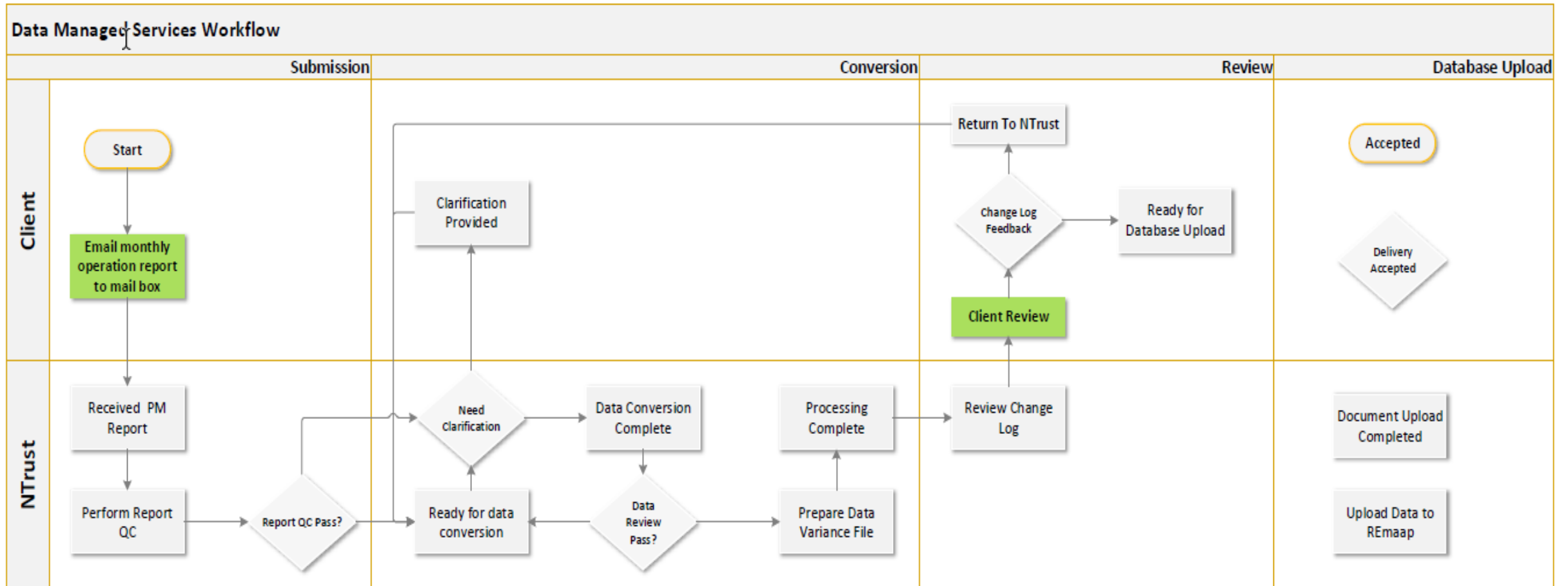
Martin Betts – Vice President EMEA, NTrust Infotech

# Aggregating & Delivering Data In A Standard Structured Format

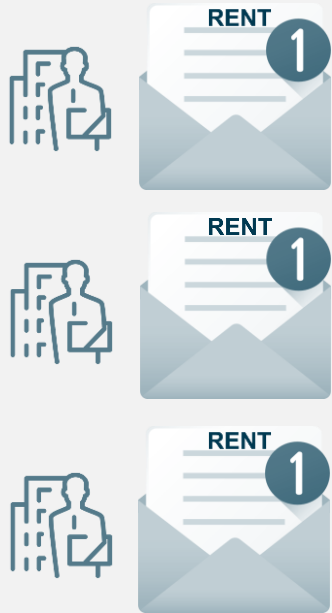




# Project & Data Workflow



# Process of Data Collection



- Every month, the property managers/Fund accountants submit rent rolls and finance data to the designated NTrust mailbox.

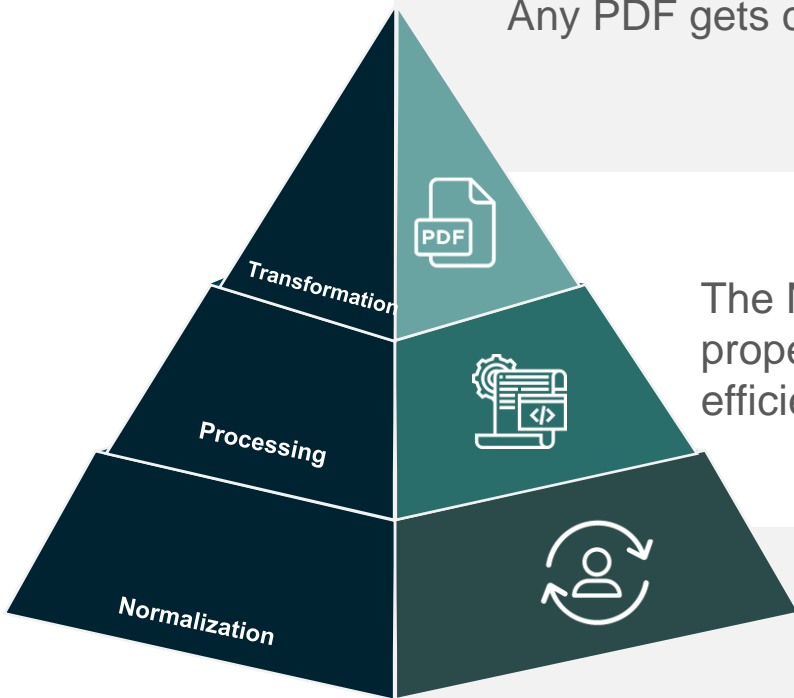


- Each mail comprises rent rolls/finance and sales data in multiple formats, originating from various properties and systems.
- These diverse data sets are submitted through client-specific email, portals, or SFTP sites.



- Files & Doc info. loaded into REmaap and processed
- Prior to data transformation, all documents and files undergo a thorough quality check to ensure their usability

# Data Transformation, Processing & Normalization



Any PDF gets converted by the NTrust team to Excel

The NTrust team meticulously reads and extracts rent roll/finance information from each property, populating REmaap with accurate rent roll/finance summaries. This process is efficiently accomplished through automation scripts developed by NTrust.

NTrust has developed a comprehensive collection of over 50 automated scripts tailored to handle various file formats received. These scripts enable seamless data transfer into REmaap, ensuring accuracy and efficiency. In cases where data is not verified by the scripts, a "Humans in the loop" approach is employed to carefully analyze and input the data into REmaap.



NTrust has implemented business logic to validate data between the incoming rent roll and the existing data in REmaap.



This validation process ensures the accuracy and consistency of the data stored in REmaap.



The business rules compare key metrics such as rent, occupancy, occupied units, and vacant units against the corresponding data in the rent roll.

By conducting these checks, NTrust maintains data integrity and minimizes discrepancies in the rent roll information.



# Data Verification



Change log is created between last month and current month data for each property.



The change log compares the tenant Occupancy, tenant monthly base rent, with previous month data



The workflow is decided by the client on how they would like to go about this.



Either PM approves the change log and moves it for upload into Data repository or provides comments for any change, and sends it back to the NTrust team



This is then validated by the PM



Once this is completed the data is sent directly to the clients chosen system or systems. E.g. A property system or a data warehouse



We completed the initial client setup within 3 months and now efficiently process 150 rent rolls / finance in just 5 days

—  
**Thank You**

